

# LAKEVIEW BAPTIST CHURCH PLAT

A PORTION OF SECTIONS 4 AND 5, TOWNSHIP 46 SOUTH, RANGE 43 EAST,  
CITY OF DELRAY BEACH, PALM BEACH COUNTY, FLORIDA

169

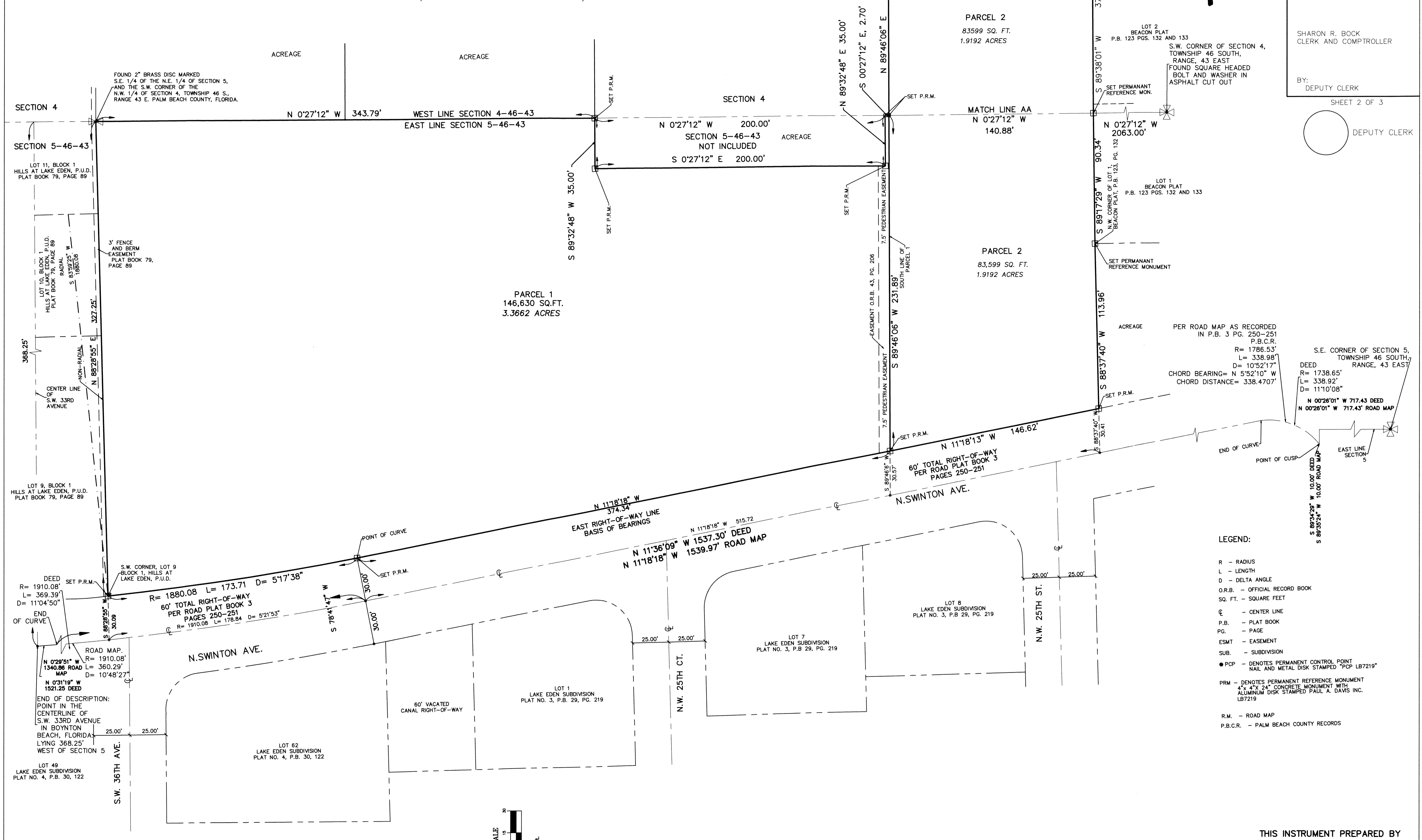
STATE OF FLORIDA  
COUNTY OF PALM BEACH

THIS PLAT WAS FILED FOR RECORD AT \_\_\_\_\_ M.  
THIS \_\_\_\_\_ DAY OF \_\_\_\_\_  
A.D. 2017 AND DULY RECORDED IN PLAT BOOK \_\_\_\_\_ ON PAGE \_\_\_\_\_

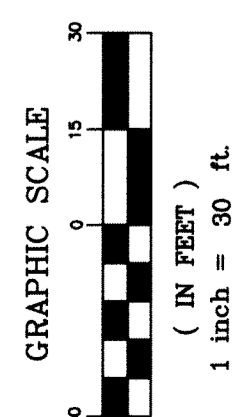
SHARON R. BOCK  
CLERK AND COMPTROLLER

BY: \_\_\_\_\_  
DEPUTY CLERK

SHEET 2 OF 3



- LEGEND:**
- R - RADIUS
  - L - LENGTH
  - D - DELTA ANGLE
  - O.R.B. - OFFICIAL RECORD BOOK
  - SQ. FT. - SQUARE FEET
  - CL - CENTER LINE
  - P.B. - PLAT BOOK
  - PG. - PAGE
  - ESMT - EASEMENT
  - SUB. - SUBDIVISION
  - PCP - DENOTES PERMANENT CONTROL POINT NAIL AND METAL DISK STAMPED "PCP LB7219"
  - PRM - DENOTES PERMANENT REFERENCE MONUMENT 4" X 4" X 24" CONCRETE MONUMENT WITH ALUMINUM DISK STAMPED PAUL A. DAVIS INC. LB7219
  - R.M. - ROAD MAP
  - P.B.C.R. - PALM BEACH COUNTY RECORDS



"NOTICE: THIS PLAT, AS RECORDED IN ITS GRAPHIC FORM, IS THE OFFICIAL DEPICTION OF THE SUBDIVIDED LANDS DESCRIBED HEREIN AND WILL IN NO CIRCUMSTANCES BE SUPPLANTED IN AUTHORITY BY ANY OTHER GRAPHIC OR DIGITAL FORM OF THE PLAT. THERE MAY BE ADDITIONAL RESTRICTIONS THAT ARE NOT RECORDED ON THIS PLAT THAT MAY BE FOUND IN THE PUBLIC RECORDS OF PALM BEACH COUNTY."

**THIS INSTRUMENT PREPARED BY**

PAUL A. DAVIS, P.S.M.  
PROFESSIONAL SURVEYOR &  
MAPPER CERTIFICATE LS 4531  
STATE OF FLORIDA  
PAUL A. DAVIS, INC.  
4710 N.E. 17TH AVENUE  
POMPANO BEACH, FLA. 33064  
LICENSED BUSINESS NO. 7219